

GOLDFINCH COVERS MEASUREMENT SHEET

Measurements for Boom Up Covers

- | | | | |
|----|--|--------|-------|
| 1. | Overall length of boat | 4680mm | _____ |
| 2. | Transom to back of mast at deck level | 2540mm | _____ |
| 3. | Corner of transom to shroud plate | 2220mm | _____ |
| 4. | Shroud plate to bow | 2530mm | _____ |
| 5. | Bow to forestay | 1200mm | _____ |
| 6. | Outer edge of gun'l to shroud plate | 30mm | _____ |
| 7. | Height of top of boom at mast above gun'l level | N/A | _____ |
| 8. | Height of curvature of transom above gun'l level | -0 | _____ |
| 9. | Will boom rest on top of transom | -no | _____ |

Overall width of boat from outside edge of gun'ls :-

- | | | | |
|-----|---------------------------|--------|-------|
| 10. | At transom | 1320mm | _____ |
| 11. | At 3' forward of transom | 1360mm | _____ |
| 12. | At 6' forward of transom | 1310mm | _____ |
| 13. | At 9' forward of transom | 1050mm | _____ |
| 14. | At 12' forward of transom | 640mm | _____ |
| 15. | At 15' forward of transom | _____ | _____ |
| 16. | At 18' forward of transom | _____ | _____ |
| 17. | At 1' back from bow | 250mm | _____ |
| 18. | Width of bow | 80mm | _____ |

These measurements are sufficient for most boom-up covers.

Note 1. For covers where boom will be down, ie resting on foredeck and transom or stern deck measurements 10 - 16 should be made over the top of the boom.

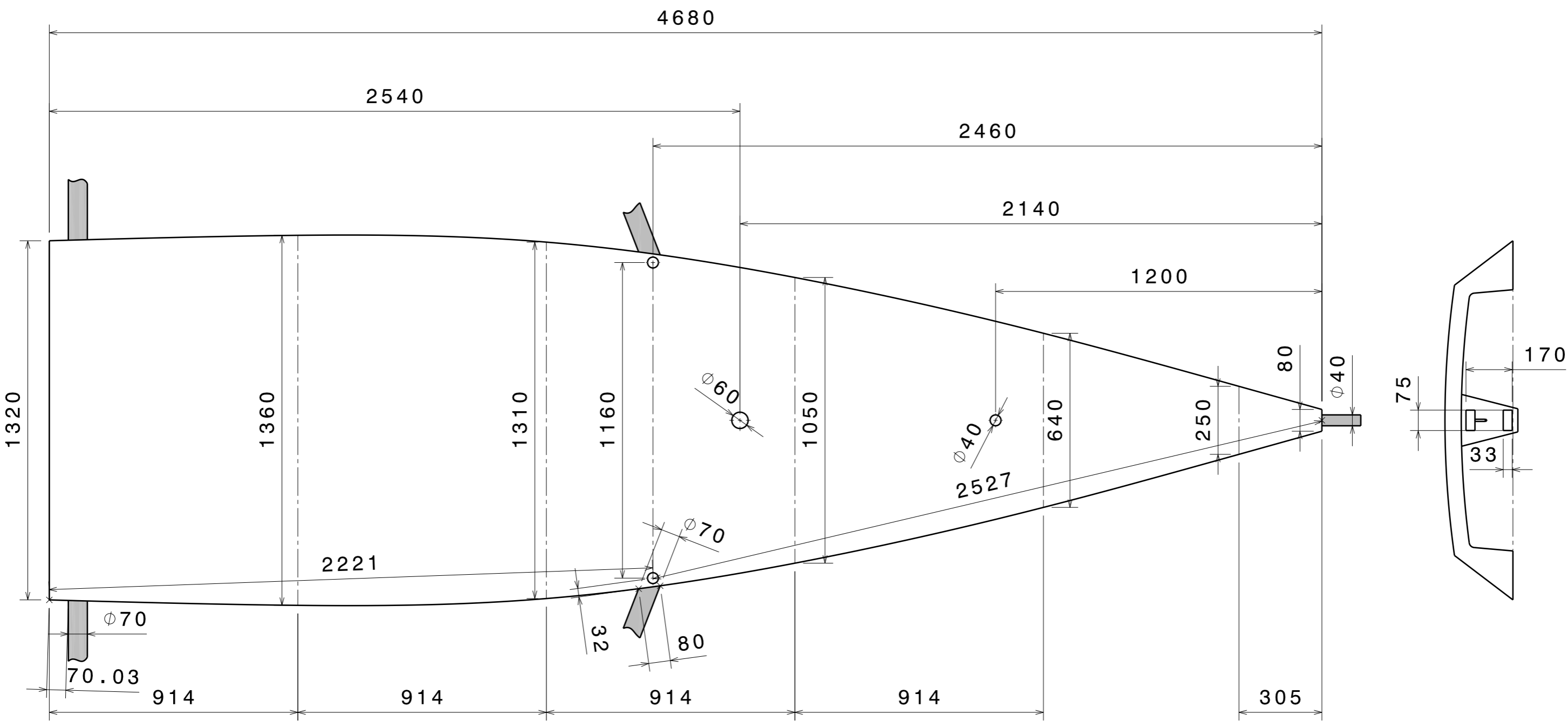
Note 2. Where the boat has special features that may affect cover, ie mainsheet hoops, mast struts, etc., please provide sketch and dimensions.

Please return form to:

Goldfinch Covers Ltd
8 Tower Estate - Dymchurch - Kent. TN29 OTN
Tel: 07754 564208 - email adechris@talktalk.net

H G F E D C B A

4
3
2
1



SIZE	A3		RS 700 pattern		E	-
SCALE	1/15	WEIGHT (kg)	DRAWING NUMBER	SHEET	D	-
DIMENSIONS IN MILLIMETERS				1/1	C	-
					B	-
This drawing is our property; it can't be reproduced or communicated without our written agreement.					A	-

H G B A