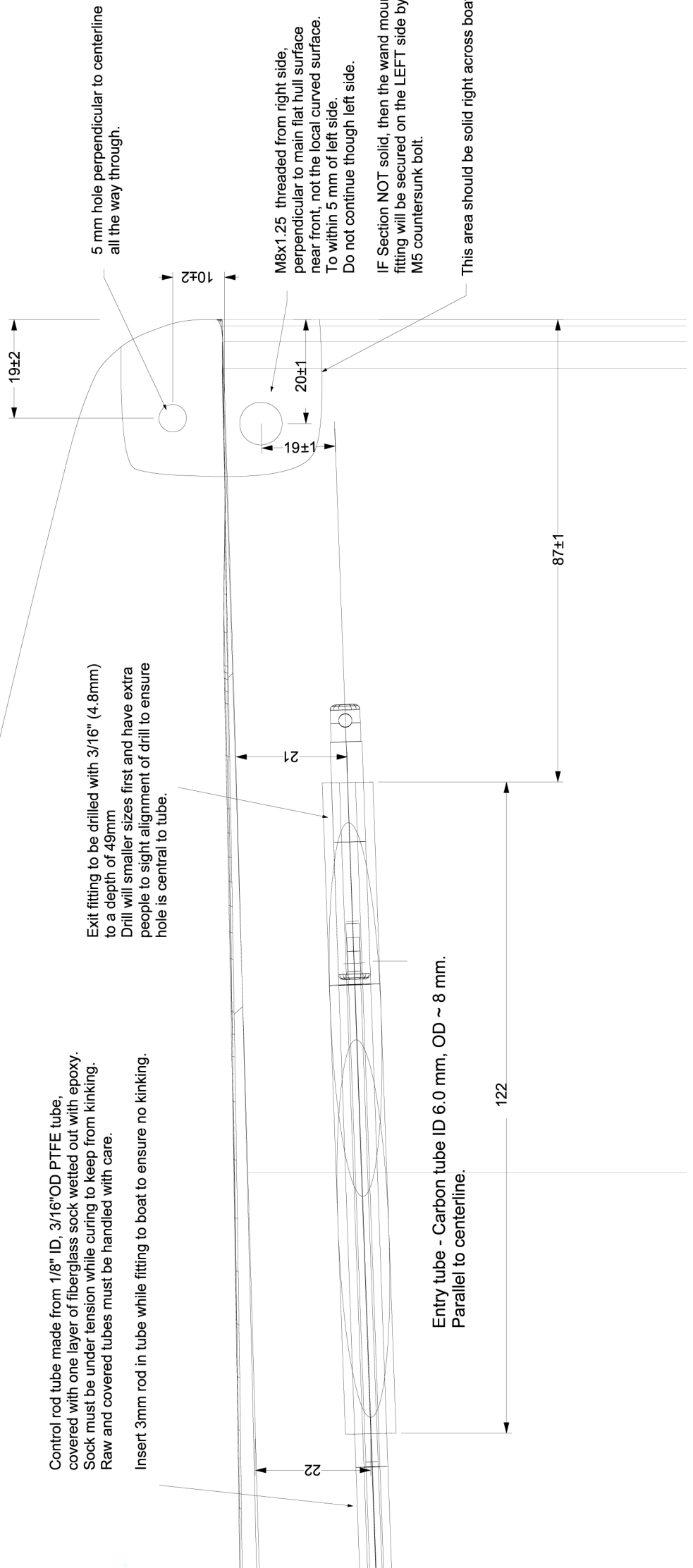


KA Bladerider Wand Assy  
 Engineering drawing name: KA BR Controls.3dm  
 Drawing# KAD030  
 Drawn A. McD 13/12/2006  
 Revised A.McD 23/02, 19/03/2007  
 Copyright 2006 KA Sail Australia Pty Ltd

Control rod tube made from 1/8" ID, 3/16"OD PTFE tube, covered with one layer of fiberglass sock wetted out with epoxy. Sock must be under tension while curing to keep from kinking. Raw and covered tubes must be handled with care.

Insert 3mm rod in tube while fitting to boat to ensure no kinking.

Exit fitting to be drilled with 3/16" (4.8mm) to a depth of 49mm  
 Drill will smaller sizes first and have extra people to sight alignment of drill to ensure hole is central to tube.



Entry tube - Carbon tube ID 6.0 mm, OD ~ 8 mm.  
 Parallel to centerline.